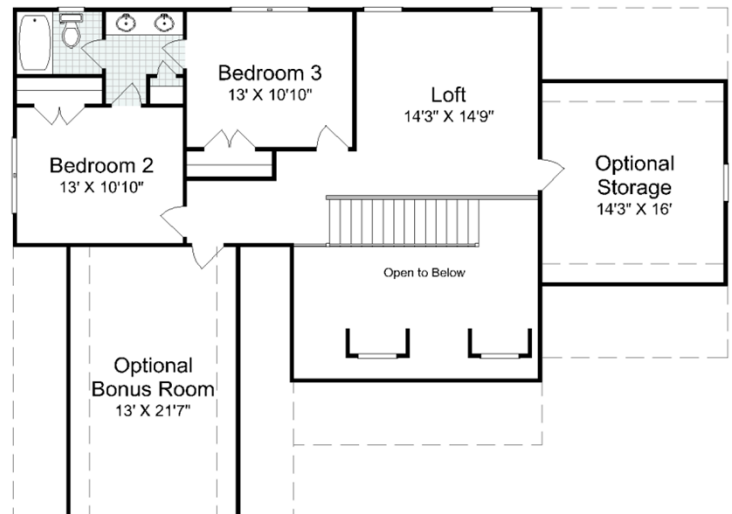
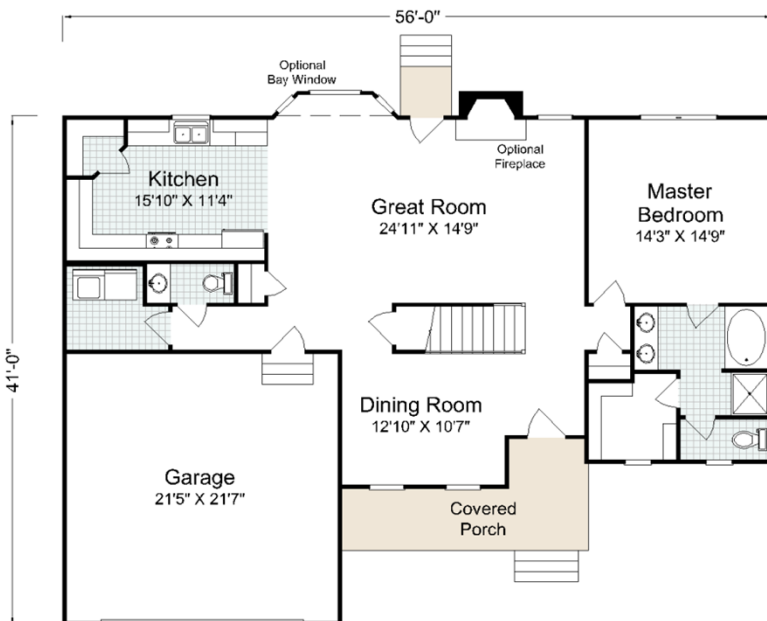




Madison Homebuilders



Monticello - This plan takes elements of the Montgomery and adds square footage for a modified interior layout. Shown above with an optional finished bonus room over a side entry garage and sidelights. Top right, shown with optional brick veneer, finished bonus room with double window over a side entry garage and oval glass front door.



1st Floor	1,390	Sq. Ft.
2nd Floor	730	Sq. Ft.
Total	2,120	Sq. Ft.

Optional Bonus Room	297	Sq. Ft.
Optional Storage Room	241	Sq. Ft.

Garage	478	Sq. Ft.
Porch	122	Sq. Ft.



This sheet is for illustrative purposes only. All dimensions are approximate. Floor plans and standard features may vary according to alternate style selected and are subject to change without notice. Optional items indicated are available at additional cost.



MH032013